

# HITACHI

## FAN COIL UNIT



# HITACHI



## GREAT AIRFLOW CAPACITY

The Hitachi Fan Coil Unit has an air flow capacity that ranges from 300 CFM to 1400 CFM with a cooling capacity between 2400 kcal/h to 11000 kcal/h and a heating capacity between 4300 kcal/h to 19500 kcal/h.



## SILENT OPERATION

Fan assembly is optimized to operate at low noise and vibration levels even at maximum performance.

## HIGHLY EFFICIENT HEAT EXCHANGER

The unit's super slit fins are equipped with high efficiency evaporators that improves heat transfer

## ADJUSTABLE GRILLS

Control the air distribution by adjusting the individual square grills according to your preference.

## MINIMAL WATER PRESSURE DROP

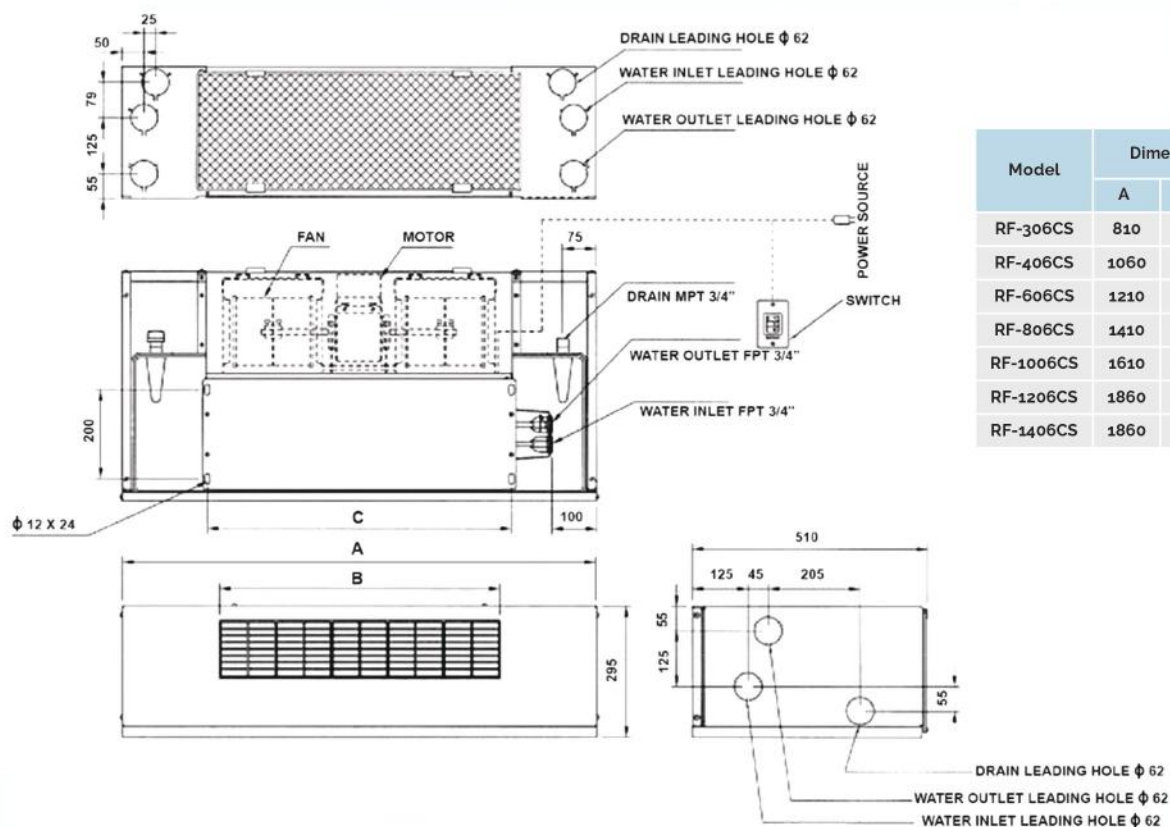
Reduced water pressure drop gives you a more consistent and reliable operation.

## HASSLE-FREE MAINTENANCE

Fan is placed inside a durable plastic casing that can manually be removed without using tools.

# UNIT DIMENSIONS

## RF-CS SERIES (HORIZONTAL BASIC TYPE)



Model	Dimensions (mm)		
	A	B	C
RF-306CS	810	375	430
RF-406CS	1060	625	680
RF-606CS	1210	750	830
RF-806CS	1410	1000	1030
RF-1006CS	1610	1250	1230
RF-1206CS	1860	1500	1480
RF-1406CS	1860	1500	1480

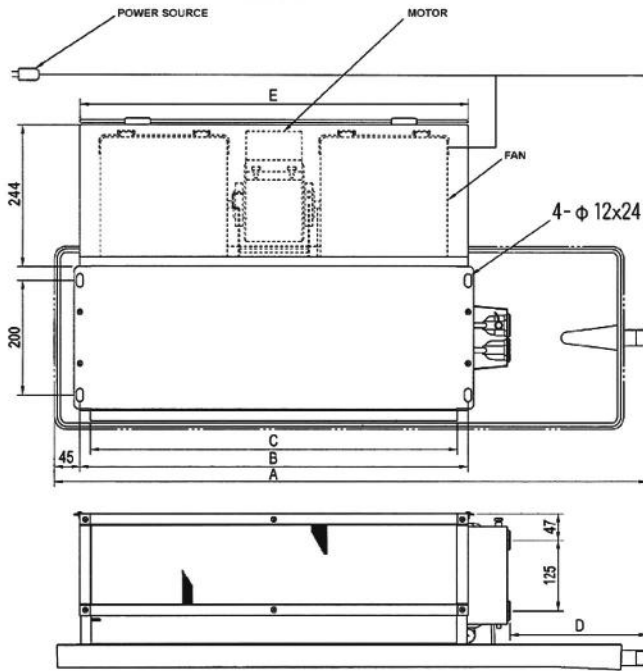
Model		RF-306CS	RF-406CS	RF-606CS	RF-806CS	RF-1006CS	RF-1206CS	RF-1406CS	
Cabinet		Electrolytic Zinc-Coated Steel Sheets							
Fan	Type	Sirocco Fan Double-Suction Type							
	Number	1	2	2	2	3	4	4	
	Air Flow	m <sup>3</sup> /min [C.F.M]	8.5 [300]	11 [400]	17 [600]	22 [800]	28 [1000]	34 [1200]	40 [1400]
Motor	Type	Single Phase Induction Motor (PSC)							
	Number	1	1	1	1	2	2	2	
	Power Source	AC, 1 ∅ 220V, 60Hz							
		60	60	90	115	145	200	290	
Coil	Type	Super Slit-Finned Tube Type							
	Row * Line	3 * 9							
	Pass	3	3	3	4	5	5	5	
	Fin Pieces Per Inch	11							
Air Flow Regulator		Tree-Positions Push Button Switch "Off, Low, Med, Hi"							
Capacity	Cooling Capacity	Kcal/hr [BTU]	2400 [9520]	3500 [13880]	4800 [19030]	6700 [26560]	8200 [32510]	9800 [38850]	11000 [43650]
	Heating Capacity	Kcal/hr [BTU]	4300 [17050]	5500 [21810]	8700 [34490]	12500 [49560]	14500 [57490]	17400 [68980]	19500 [77380]
	Water Flow	L/min [G.P.M]	8 [1.73]	11 [2.46]	16 [3.48]	22 [4.91]	25 [5.5]	32 [7.04]	37 [8.14]
	Water Pressure Drop	mAq	0.7	1.3	3.4	4.4	2.2	3.7	5.5
Piping	Water Inlet	F.P.T. 3/4							
	Water Outlet	F.P.T. 3/4							
	Drain Outlet	M.P.T. 3/4							
Unit Weight	Kg [lb]	30 [66]	35 [77]	45 [99]	50 [110]	60 [132]	70 [154]	70 [154]	

## Notes:

- Cooling capacity is based on entering air temperature 27°C D.B., 19.5°C W.B., entering water temperature 7°C and standard water flow rate.
- Heating capacity is based on entering air temperature 21°C D.B. and entering water temperature 60°C and standard water flow rate.
- Air flow is approximately adjustable to 100% (High), 80% (Medium), 60% (Low).
- Normal piping connections are on right side of units when facing chilled water coil. If piping connections are desired on left side, please specify in your order.

# UNIT DIMENSIONS

## RF-CIP SERIES (HORIZONTAL BASIC TYPE)



Model	Dimensions (mm)				
	A	B	C	D	E
RF-307CIP	1050	430	392	488	435
RF-407CIP	1250	680	642	438	685
RF-607CIP	1400	830	792	438	835
RF-807CIP	1600	1030	992	438	1034
RF-1007CIP	1850	1230	1192	488	1234
RF-1207CIP	2100	1480	1442	488	1484
RF-1407CIP	2100	1480	1442	488	1484

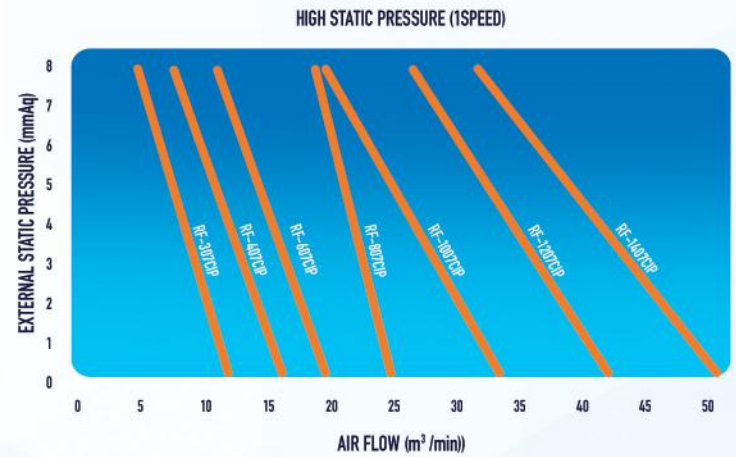
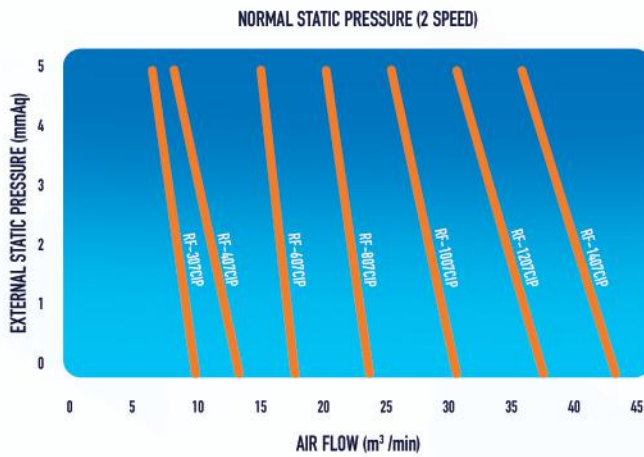
  

Model			RF-307CIP	RF-407CIP	RF-607CIP	RF-807CIP	RF-1007CIP	RF-1207CIP	RF-1407CIP
Cabinet			Electrolytic Zinc-Coated Steel Sheets						
Fan	Type		Sirocco Fan Double-Suction Type						
	Number		1	2	2	2	3	4	4
	Static Pressure		5mmAq						
	Air Flow	m <sup>3</sup> /min [C.F.M]	8.5 [300]	11 [400]	17 [600]	22 [800]	28 [1000]	34 [1200]	40 [1400]
Motor	Type		Single Phase Induction Motor (PSC)						
	Number		1	1	1	1	2	2	2
	Power Source		AC, 1 Ø 220V, 60Hz						
			52	61	103	140	149	202	310
Coil	Type		Super Slit-Finned Tube Type						
	Row ' Line		3 ' 9						
	Pass		3	3	3	4	5	5	5
	Fin Pieces Per Inch		11						
Air Flow Regulator			Tree-Positions Push Button Switch "Off, Low, Med, Hi"						
Capacity	Cooling Capacity	Kcal/hr [BTU]	2400 [9520]	3500 [13880]	4800 [19030]	6700 [26560]	8200 [32510]	9800 [38850]	11000 [43650]
	Heating Capacity	Kcal/hr [BTU]	4300 [17050]	5500 [21810]	8700 [34490]	12500 [49560]	14500 [57490]	17400 [68980]	19500 [77380]
	Water Flow	L/min [G.P.M]	8 [1.73]	11 [2.46]	16 [3.48]	22 [4.91]	25 [5.5]	32 [7.04]	37 [8.14]
	Water Pressure Drop	mAq	0.7	1.3	3.4	4.4	2.2	3.7	5.5
Piping	Water Inlet		F.P.T. 3/4						
	Water Outlet		F.P.T. 3/4						
	Drain Outlet		M.P.T. 3/4						
Unit Weight		Kg [lbf]	19 [42]	25 [55]	28 [62]	32 [71]	40 [88]	46 [101]	46 [101]

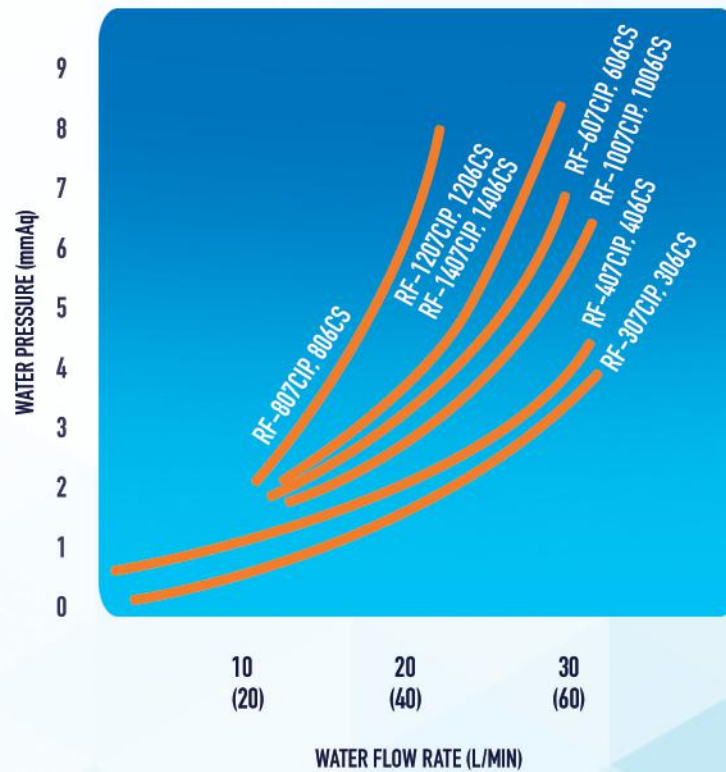
- Notes:
- Cooling capacity is based on entering air temperature 27°C D.B., 19.5°C W.B., entering water temperature 7°C and standard water flow rate.
  - Heating capacity is based on entering air temperature 21°C D.B. and entering water temperature 60°C and standard water flow rate.
  - Air flow is approximately adjustable to 100% (High), 80% (Medium), 60% (Low).
  - Normal piping connections are on right side of units when facing chilled water coil. If piping connections are desired on left side, please specify in your order.

# OTHER PERFORMANCE CHARTS

## FAN STATIC PRESSURE CURVES (RF-CIP)



## WATER PRESSURE DROP CURVE



VALUE IN [ ] IS FOR RF-807CIP, RF-806CS  
 RF-1007CIP, RF-1006CS  
 RF-1207CIP, RF-1206CS  
 RF-1407CIP, RF-1406CS

# Your World In Better Comfort

# HITACHI

Manila Office: Tel: (02) 362-4847 Fax: (02) 362-1769 Service: (02) 362-3842  
Cebu Office: Tel: (032) 232-6634 Fax: (032) 231-7533 Service: (032) 232-8831

Specifications in this catalog are subject to change without any notice in order that HITACHI may bring the latest innovations to our customers.

HAPP-RF-1601