

PRODUCT FIELD INSPECTION REPORT

approved:

checked:

prepared:

2012-11-14
CHEN

2012-11-14
BARRIENTOS
ARIEL

2012-11-14
PAMINIANO
JAMES

Report no: PFIR-12-030	Pass / distributed to: (HAPP-M)	<div style="display: flex; justify-content: space-around;"><div>○</div><div>○</div><div>○</div><div>○</div><div>○</div><div>○</div></div>					
Company and Address	7-11 MONTALBAN BURGOS, J.P. RIZAL COR. MONTAÑA DRIVE, BRGY. BURGOS MONTALBAN, RIZAL						
Subject:	THE UNIT WAS TRIPPED OFF AFTER FEW HOURS OPERATION						
Model and Serial no:	RAM-6FNS (E01867,E01978)						
Checked / inspected: (Hitachi Representative)	ENGR. JAMES ROLAND PAMINIANO / REGIONALD VILLON	Date of Inspection	November 13, 2012				
		Service Reg. No.	20112				

Problem reported:

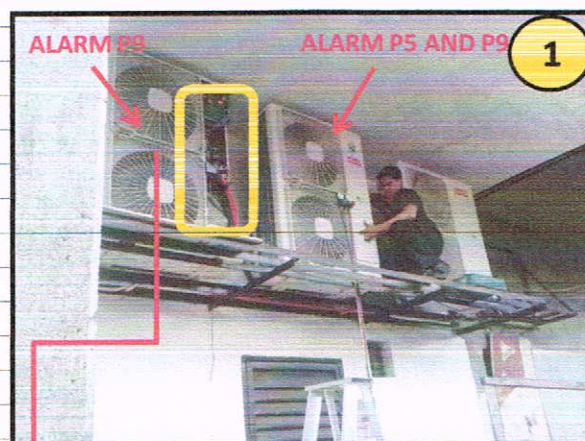
The unit was unable to operate due to protection device activated.

Actual Problem based on Inspection :

1. Why the unit was frequent tripping?

One of the possible cause is the activation of protection device, the display are P5 and P9. The meaning of P5 is Discharge Gas Temperature Increase Protection and P9 is Unbalance Power Source Detecting. You can see at picture#3, the actual installation of power supply wire and transmission wire. Based on hitachi manual, the power supply wire and transmission wire must be separated because it can create an induction thru the wire and that's why the protection device is activated. The power supply for indoor unit must have a separate circuit breaker.

At picture #1, the actual location of outdoor unit. The middle outdoor unit have the alarm P5. In that case, there's no enough fresh air to sucked by the outdoor unit.



ACTUAL LOCATION OF OUDOOR UNIT

(b) Obstacles in Above

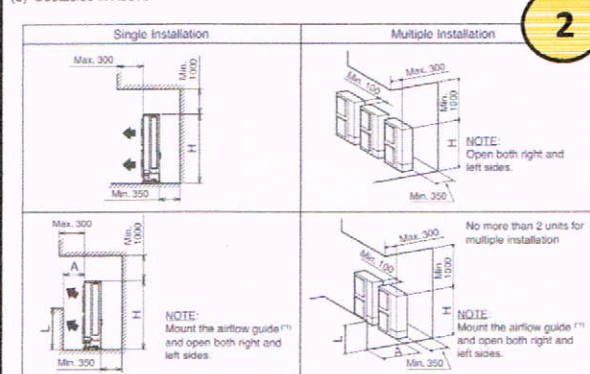
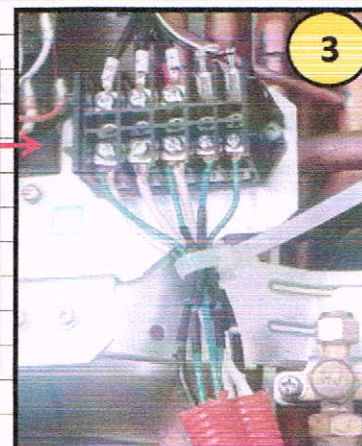
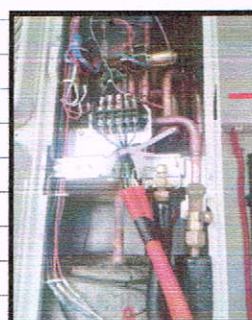


Fig. 4.2 Installation Space (2)



STANDARD INSTALLATION SPACE

TERMINAL BLOCK OF OUDOOR UNIT

SOLUTION / REMARKS:

1. Separate the power supply of indoor unit.
2. Separate the transmission wire to the power supply.
3. If P5 still occur, the standard installation space must be applied.